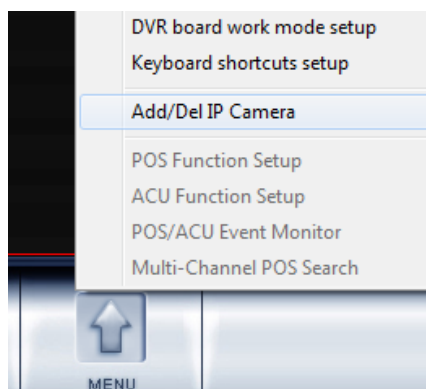
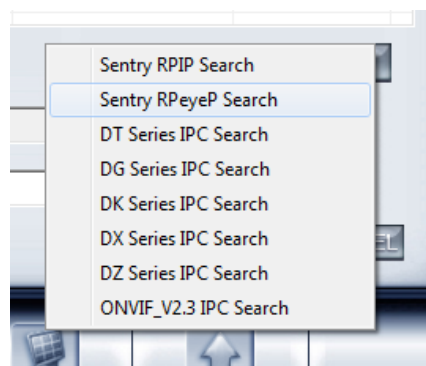


RPVS/4 Quick Start Guide

1. Connect the power cable, network cable and analog cameras.
2. Open the Hybrid NDVR software and click **Menu -> Add/Del IP Camera**



3. Click IPC Search and select **Sentry RPeyeP Search**.



1

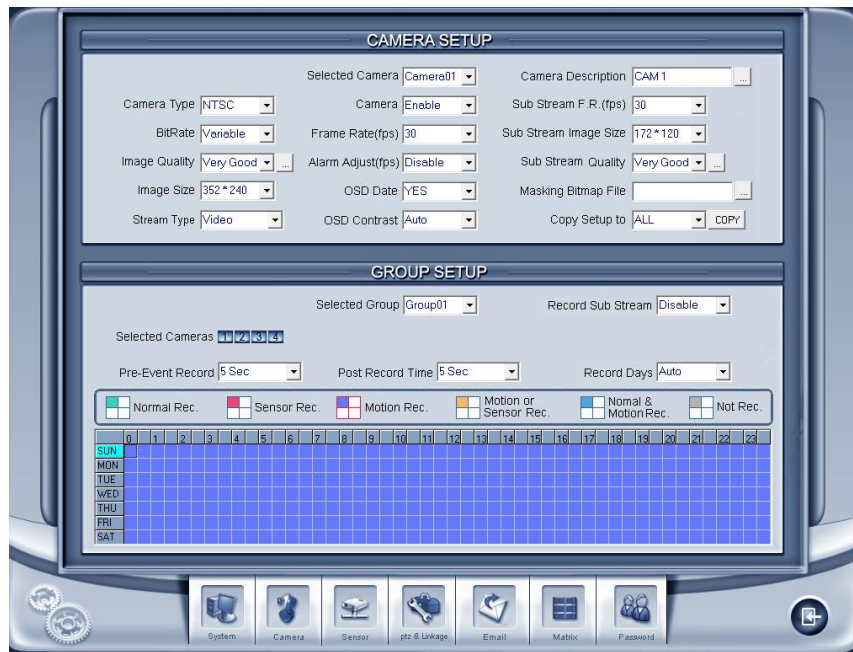
Sales/Customer Service

sales@cctvsentry.com

Technical Support

tech@cctvsentry.com

Contact Us Directly Toll Free: 1-866-736-8796



From the live view window, you will now see the analog cameras from the RPVS connected and recording.