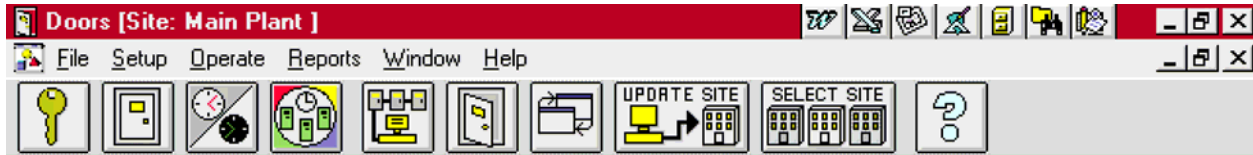




Keri 500 Series Access Control Software

for use with Windows™



- No dedicated PC required, runs in the background with other applications
- PC does not need to be permanently on or connected - only required during uploading, downloading, or monitoring
- Full Windows feature set, including multiple windows open simultaneously, window resizing and relocating, drag and drop functions, cascading and tiling, no DOS boxes
- Remote multiple site monitoring with dial up, global and site specific card enrollment, and reporting
- Configurable automatic download of controller event buffer
- 32 system operators, each with password protection and configurable privileges
- 32 time zones, each with 4 start and stop intervals
- 3 holiday schedules, each with 32 user definable holidays. On-board calendar included for programming ease
- Unlimited number of Access Groups
- 6 extra sortable, user definable text fields for individual cardholder information in addition to last name, card number, access group and department group
- Alarm system control and reporting with NetworX (Caddx) NX-8E Alarm Panel
- Future card activation and expiration

The Keri 500 Series Access Control Software allows an access control system utilizing Keri's 500 Series Controllers to be configured and managed. The Software makes use of all popular Windows features such as resizing and relocation of windows, drag and drop functions, multiple windows open simultaneously, and "real time" operation. The operator is provided with an extremely user friendly interface that defines system parameters, manages card and transaction files, sets timing functions, and prepares reports. **The Software** operates under Windows 95, 98, NT, 2000, ME, or XP and is capable of managing a single site via direct connect or modem as well as virtually an unlimited number of remote sites via modem or TCP/IP (ethernet). Video Badging is available as an option, providing photo identification and other information on each Access Card.

Keri has designed some great features into the 500 Series software that make it extremely easy and flexible to learn and use, one such example is the **Spreadsheet or Dialog Box Interface** (see below): For operators who are familiar with Microsoft Excel™, many operations can be performed in spreadsheet format, with simple sorting, block and copy functions.

Line	Last Name	First Name	Card Start	Access Group	Dept Group	On Off	Expir Date
1	Johnson	Richard	1803	Shop/Production	Production	ON	11/02/99
2	Anderson	James	1802	Control Rm	Maintenance	ON	11/02/99
3	Stalen	Kirk	1802	Swing Shift	Maintenance	ON	11/02/99
4	Johnson	Richard	1803	Shop/Production	Production	ON	11/02/99
5	Johnson	Matt	1803	Managers	Administration	ON	11/02/99
6	Johnson	Erny	1803	Managers	Administration	ON	11/02/99
7	Johnson	Scott	1803	Shop Shift	Engineering	ON	11/02/99
8	Smith	Robert	1802	Control Rm	Maintenance	ON	11/02/99
9	Johnson	Richard	1803	Managers	Administration	ON	11/02/99
10	Johnson	Phoe	1803	Managers	Administration	ON	11/02/99
11	Johnson	Phoe	1803	Managers	Administration	ON	11/02/99
12	Thomas	Bill	1804	Swing Shift	Administration	ON	11/02/99
13	Hompson	Joey	1803	Card Access	Administration	ON	11/02/99
14	Johnson	Lucille	1803	Shop Shift	Administration	ON	11/02/99