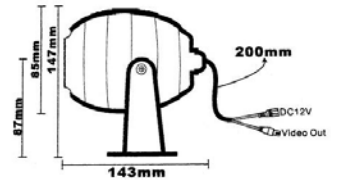
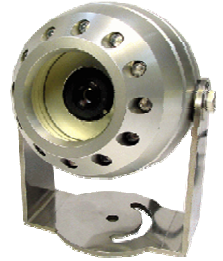


Mintron™ B-53X10

Features

- 1/3" Extra-View Color CCD and Mintron 20 MIPS DSP
- 380TV Lines (470 Equivalent with Adaptive Edge Enhancement)
- 0.5 Lux at F1.2 (Color); 0.0 Lux with Infrared
- Heavy Duty, Vandalproof Cast Aluminium Case



Description

A vandal-proof, waterproof, bullet, color CCTV camera with 1/3" Extra View CCD and Mintron™ 20MIPS DSP. This camera utilizes a heavy duty, cast aluminum case with a tamper-proof fastening. It is capable of resisting a blow from a sledge hammer or blast from a shotgun. The camera includes Infra-Red LEDs for image production at light levels less than 0.5 Lux – down to and including total darkness. It produces excellent quality video, in color, at 380/470 TV lines. The Extra View CCD provides color images down to an excellent minimum illumination level of 0.5 Lux @F1.2, and black and white images at lower light levels, under Infra-Red.

Recommended Use: Indoors or outdoors, in high damage-risk areas. Provides good quality color video down to relatively low light levels and black and white video under Infra-Red. Not for indoor use pointing at exterior windows or doors, where the high light sensitivity of the CCD causes flaring effects.

Mintron™ B-53X10N & B-53X10P SPECIFICATIONS

MODEL	B-53X10N	B-53X10P
TV System	NTSC	PAL
Picture Element	542(H) X 496(V)	542(H) X 586(V)
Scanning System	525 lines, 60 fields/sec	625 lines, 50 fields/sec
Sync System	Internal	
Lens & View Angle	0.5 Lux at F1.2 in color mode. 0 Lux with IR-LED	
Minimum Illumination	0.3Lux at F1.2; 0.0 Lux IR ON	
Resolution	380 TVL/470 TVL (Enhanced)	
S/N Ratio	52dB (MIN) / 60dB (TYP) (AGC OFF)	
Auto Iris	A.E.S.	
A.E.S.	1/60~1/100,000 sec.	1/50~1/100,000 sec.
Video Output	1.0V p-p composite video at 75 ohm	
Lens	4mm to 8mm Vari-focal, Auto-Iris	
Gamma Correction	0.45	
Gain Control	AGC	
White Balance	ATW / AWC(option) (Zero color rolling)	
White Balance Range	3200---10000 °K	
Operation Temperature	-20°C TO 50°C	
Operation Humidity	within 85% RH	
Power Source	DC 12V±1V / 100mA	

For more information on any of our products or services please

visit us on the Web at:

www.sentry-resellers.com

or

www.cctvsentry.com



SENTRY SECURITY SYSTEMS INC.
C/O Door 201
44951 Co. Route 191
Wellesley Island, NY 13640



1257 Midland Ave. Unit #1
Kingston, ON, K7P 2Y1
Phone: 866.736.8796
Fax: 613.384.1733

